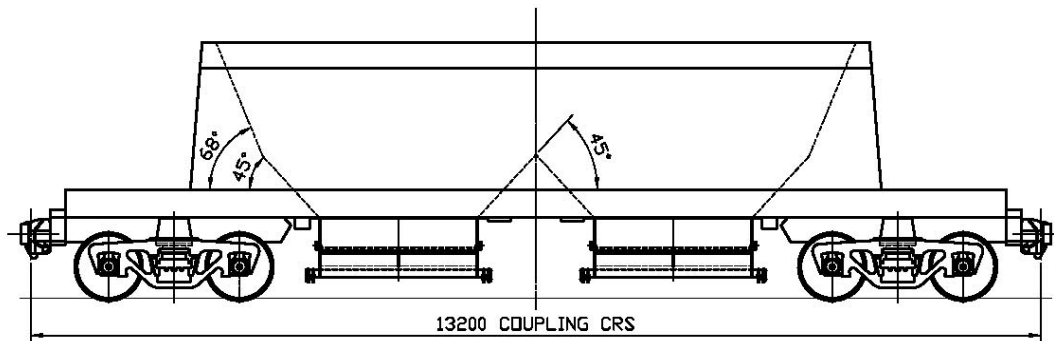
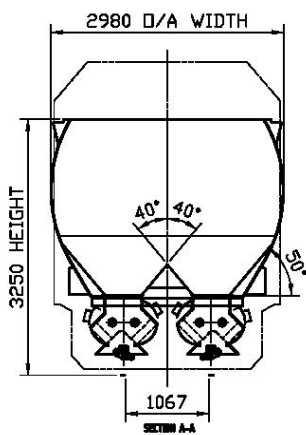




<b>Class</b>	CHNY	<b>Tare Weight</b>	22.50 tonnes
<b>Wagon Type</b>	Open Hopper	<b>Gross Mass</b>	76.00 tonnes
<b>Volume</b>	33m <sup>3</sup>	<b>Capacity</b>	52.50 tonnes
<b>Previous Class</b>	CHMF	<b>Unit Length</b>	13.2 m
<b>Number in Class</b>	15	<b>Maximum Speed</b>	100 km/h
<b>Wagon Numbers</b>	6001-6015	<b>Gauge</b>	1067mm (Narrow)
<b>Date of Acquisition</b>	2002	<b>Draw Capacity</b>	1.2 Mn
<b>Rollingstock Outline</b>	ROA Plate C	<b>RIC Class</b>	N/A





**Wagon Class** CHNY

**Designer** Gemco

**Builder** Gemco

**Re-Build Date** 2004

**GA Drawing No.**

**Bogie Details**

<b>Bogie Type</b>	National 50T Ride Control Narrow Gauge
<b>Designation</b>	AAR Class 2E
<b>Axle Load</b>	19 Tonne
<b>Load Springs</b>	AAR D5 x 5 Outer AAR D5 x 7 Inner
<b>F. Wedge Springs</b>	RFE 18 x 1 Outer
<b>Wheel Diameter</b>	840mm
<b>Journal Centres</b>	1676mm
<b>Wheelbase</b>	1727mm
<b>Centre Plate</b>	Welded 350mm
<b>Journal Bearings</b>	5 1/2" x 10"
<b>Brake Lever Ratio</b>	4:1
<b>Side Bearers</b>	Stucki SSB 6000

**Draftgear**

<b>Assembly Drawing</b>	N/A
<b>Draftgear Spec</b>	M901-E
<b>Coupler Type</b>	BK16752
<b>Coupler Length</b>	680 mm

**Brake Details**

<b>Assembly Drawing</b>	N/A
<b>Brake Cylinder Type</b>	250mm dia
<b>Mounting</b>	Body
<b>Relay Valve</b>	J2
<b>Triple Valve</b>	WF2 Long
<b>Load Compensation</b>	EL Manual Change Over
<b>Grade Control</b>	None
<b>Slack Adjuster</b>	J2B Pneumatic
<b>Hand Brake</b>	End Mounted
<b>Bifurcated Pipe</b>	No

**Loading/Unloading**

<b>Loading</b>	Top
<b>Unloading</b>	Pneumatic Bottom Discharge
<b>Discharge Chutes</b>	Gemco Ballast Door Assembly